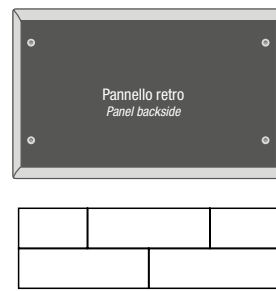




- Pannello in multistrato di legno di faggio.
- Sempre sfoderabile
- Composizione asimmetrica possibile
- Solid beech plywood
- Removable cover
- Asymmetric solution possible



Boiserie Set Slim spessore 5 H. 17 cm

Boiserie Set Slim thickness 5 H. 17 cm

| Dimensioni Size | Codice Code | H.L.P. | Tessuti - Fabrics | | | | Pelle - Leather | | | Tessuto cliente L./H. C.O.M. fabric L./H. | m³ | kg |
|-----------------|-------------|------------|-------------------|----------|-----------|--------|-----------------|-----------|-------------|---|----|----|
| | | | Cat. B | Cat. C/D | Cat. Must | Cat. K | Cat. E | Cat. Plus | Cat. Luxury | | | |
| 60 | 27I060017 | 17,5x60x5 | | | | | | | 0,68x3/1,40 | 0,03 | 3 | |
| 85 | 27I085017 | 17,5x85x5 | | | | | | | 0,96x3/1,40 | 0,07 | 4 | |
| 100 | 27I100017 | 17,5x100x5 | | | | | | | 1,12x3/1,40 | 0,07 | 4 | |
| 120 | 27I120017 | 17,5x120x5 | | | | | | | 1,35x3/1,40 | 0,07 | 5 | |
| 135 | 27I135017 | 17,5x135x5 | | | | | | | 1,50x3/1,40 | 0,09 | 6 | |
| 180 | 27I180017 | 17,5x180x5 | | | | | | | 2,0x3/1,40 | 0,09 | 8 | |
| 200 | 27I200017 | 17,5x200x5 | | | | | | | 2,20x3/1,40 | 0,09 | 8 | |

Per rivestimento supplementare vedi pag. 186
For additional cover see page. 186

Boiserie Set Slim spessore 5 H. 35 cm

Boiserie Set Slim spessore 5 H. 35 cm

| Dimensioni Size | Codice Code | H.L.P. | Tessuti - Fabrics | | | | Pelle - Leather | | | Tessuto cliente L./H. C.O.M. fabric L./H. | m³ | kg |
|-----------------|-------------|----------|-------------------|----------|-----------|--------|-----------------|-----------|-------------|---|----|----|
| | | | Cat. B | Cat. C/D | Cat. Must | Cat. K | Cat. E | Cat. Plus | Cat. Luxury | | | |
| 60 | 27I060035 | 35x60x5 | | | | | | | 0,68x2/1,40 | 0,03 | 4 | |
| 85 | 27I085035 | 35x85x5 | | | | | | | 0,96x2/1,40 | 0,07 | 7 | |
| 100 | 27I100035 | 35x100x5 | | | | | | | 1,12x2/1,40 | 0,07 | 7 | |
| 120 | 27I120035 | 35x120x5 | | | | | | | 1,35x2/1,40 | 0,07 | 8 | |
| 135 | 27I135035 | 35x135x5 | | | | | | | 1,50x2/1,40 | 0,09 | 10 | |
| 180 | 27I180035 | 35x180x5 | | | | | | | 2,0x2/1,40 | 0,09 | 12 | |
| 200 | 27I200035 | 35x200x5 | | | | | | | 2,20x2/1,40 | 0,09 | 13 | |

Per rivestimento supplementare vedi pag. 186
For additional cover see page. 186

Boiserie Set Slim

Accessori Set

Set accessories

| Dimensioni Size | Codice Code | H.L.P. | Finitura - Finish | | m³ | kg | Dimensioni Size | Codice Code | H.L.P. | Finitura - Finish | | m³ | kg |
|-----------------|-------------|--------|--------------------------|--|------|----|-----------------|-------------|--------|--------------------------|--|------|----|
| | | | Grigio antracite (...04) | | | | | | | Grigio antracite (...04) | | | |
| 56 | 27N060035 | 35x56 | | | 0,05 | 6 | | 31QTLM | 45x8 | | | 0,01 | 1 |
| 116 | 27N120035 | 35x116 | | | 0,10 | 12 | | 31QTSC | 31x35 | | | 0,01 | 1 |
| 176 | 27N180035 | 35x176 | | | 0,15 | 19 | | | | | | | |
| 0 40 | 27N040040 | | | | 0,07 | 4 | | | | | | | |

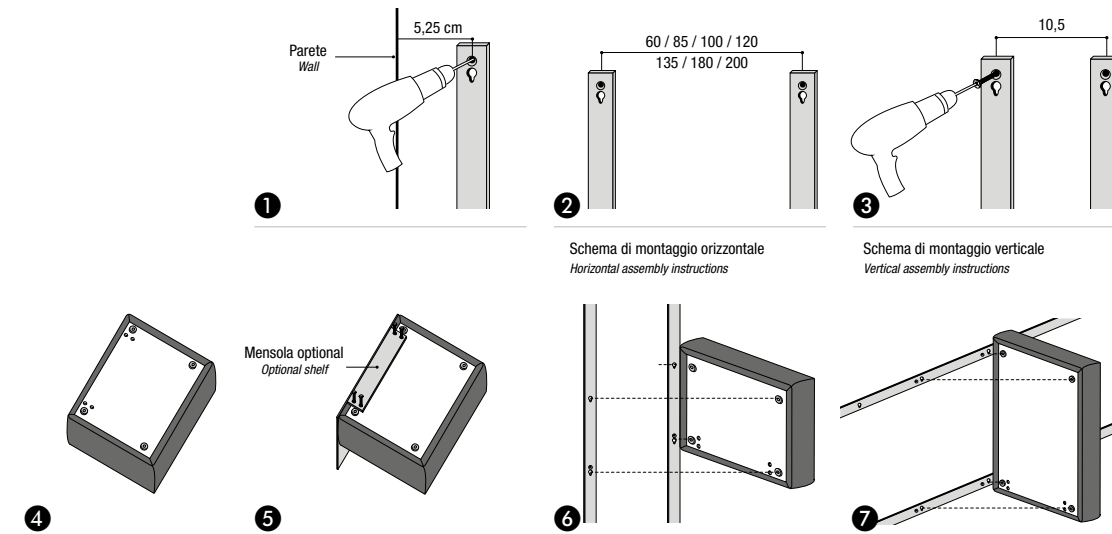
Esempi

Example

| Dimensioni Size | Codice Code | H.L.P. | Tessuti - Fabrics | | | | Pelle - Leather | | | Tessuto cliente L./H. C.O.M. fabric L./H. | m³ | kg |
|-----------------|-------------|-----------|-------------------|----------|-----------|--------|-----------------|-----------|-------------|---|----|----|
| | | | Cat. B | Cat. C/D | Cat. Must | Cat. K | Cat. E | Cat. Plus | Cat. Luxury | | | |
| 104x320 | | 104x320x5 | | | | | | | | | | |
| 86x320 | | 86x320x5 | | | | | | | | | | |
| 135x312 | | 135x312x5 | | | | | | | | | | |

Schema di montaggio orizzontale / verticale

Horizontal and vertical assembly instructions



BOISERIE con scatola elettrica (3 mod.)
BOISERIE pred. box (3 mod.)

Solo boiserie Set Slim spessore 5 H35
Only Boiserie Set Slim thickness 5 H35